

124 SPIDER

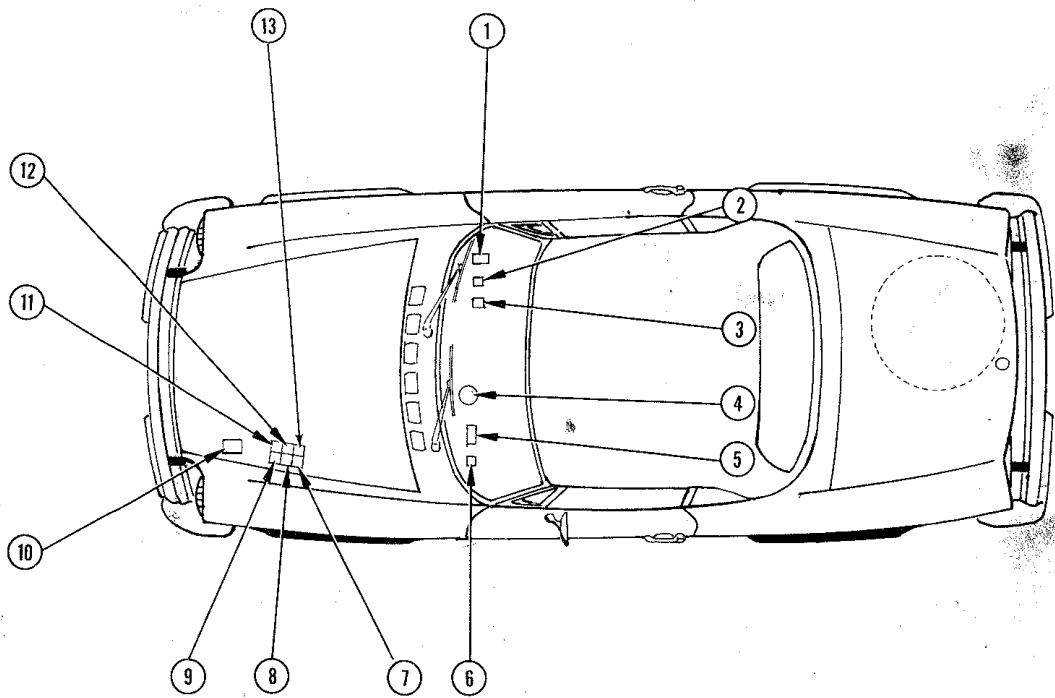
Table of Contents

		PAGE	
	Relay location chart	124-1	
	Component index, connector code, and wire color code	124-2	
FUSE	CIRCUITS		
A Unprotected	Engine cooling fan, horn starter circuit	124-3	
B	Windshield wiper/washer and heater fan	124-4	
C D E F G H	Headlights, parking lights, side marker lights, and instrument panel lights	124-5	
I		Handbrake ON and brake system effectiveness indicator, fasten belts indicator and relay, turn signal lights, diverter valve by-pass switch, back-up lights, EGR by-pass, fast idle system, EGR and CATALYST indicators	124-6
Inline fuse		Remove key and fasten belts buzzer	
I		Diverter valve by-pass system, catalytic temperature control unit, tachimetric switch and carburetor idle stop solenoid, fuel, oil, and water gauges and indicators, tachometer	124-7
L		Voltage regulator and alternator	124-3
Inline fuse		Current receptacle, hazard warning lights, courtesy light, clock, and cigarette lighter	124-9
Inline fuse Unprotected	Fuel pump carburetor idle stop solenoid and ignition system	124-10	
	Component index, connector code, and wiring color code	124-11	

124 SPIDER

Relay and Component Location Chart

CHART NO.	COMPONENT NO.	DESCRIPTION	PART NO.
1	189	Seat belt warning delay switch	4357723
2	128/1	Fasten belts relay	4320622-4337070
3	126	Fasten belts and remove key buzzer	4320622-4337070
4	30	Turn signal flasher	4300635
5	31	Windshield wiper intermittent switch	4177176
6	32	Hazard warning flasher	4200679
7	128	Battery charge relay	4348306
8	128/3	Fuel/pump relay	4320627
9	128/2	Ignition mode relay	4320627
10	6	Voltage regulator	—
11	128/5	Diverter valve by-pass relay	4320626-4337068
12	39	Engine fan relay	4320629-4337067-4320625
13	15	Horn relay	4320629-4337067



124 SPIDER

Component Index, Connector Code, and Wire Color Code Charts

COMPONENT INDEX

1	Left headlight	59	Clock
2	Left front parking light	61	Fuel reserve indicator
3	Left front side marker light	63	Low oil pressure indicator
5	Alternator	64	Turn signal indicator
6	Regulator	65/1	Hazard warning indicator
9	Distributor	65/2	Brake system effectiveness and hand brake ON indicator
10	Coil	65/3	Fasten belts indicator
12	Starter motor	65/4	25,000 miles EGR indicator
15	Horn relay	65/5	25,000 miles CATALYST indicator
17	Engine water temperature gauge sending unit	65/6	Catalytic converter temperature SLOW DOWN indicator
18	Oil pressure gauge sending unit	66	Battery charge indicator
18/1	Low oil pressure indicator sending unit	67	Parking light indicator
18/2	Engine water temperature gauge thermostatic switch	69	High beam indicator
18/3	Brake system effectiveness indicator switch	74	Cigarette lighter
18/4	Thermostatic switch for ignition mode relay	76	Hand brake ON switch
18/5	Idle stop solenoid switch (Calif. version only)	79	Horn button
18/6	Thermostatic switch for diverter valve by-pass system	81	Current receptacle
23	Battery	84	Washer pump motor
24	Catalytic converter thermocouple	85	Courtesy light with switch
25	Back-up lights and 5th gear switch	87	Courtesy light jamb switch
26	Stop lights switch	87/1	Remove key buzzer jamb switch
28	Fuse box	93	Fuel tank sending unit
28/1	Fuse, 25A	95	Trunk light
28/2	In-line fuse, 3A-remove key buzzer system	98	Tail, turn signal, stop and back-up lights unit
28/3	In-line fuse, 16A — Interior lights, hazard warning system, clock and cigarette lighter	98/1	Rear side marker lights
28/4	In-line fuse, 8A — fuel pump and ignition mode	99	License plate lights
30	Turn signal flasher	104	Thermostatic switch for engine cooling fan
31	Windshield wiper intermittent switch	120	Fuel pump
32	Hazard warning flasher	126	Fasten belts and remove key buzzer
33	Water temperature gauge resistor (32 OHM)	128	Battery charge relay
35	Windshield wiper motor	128/1	Fasten belts relay
37	Heater fan motor	128/2	Ignition mode relay
37/1	Engine fan motor	128/3	Fuel pump and ignition mode relay
39	Engine fan motor relay	128/5	Diverter valve by-pass relay
40	Instruments lights rheostat switch	130	Horn compressor
40/1	Ideogram lighting potentiometer	158	Idle stop solenoid
41/1	Windshield wiper 2-speed switch	161	Ideogram light
42	Turn signal switch	186	Odometer switch (25,000 M recorder)
42/1	High/low beam changeover switch	187	Tachimetric switch
42/2	Windshield wiper/washer switch	188	Catalytic converter temperature
44	Ignition switch	189	Seat belt warning delay switch
46	Outer lighting switch	190	Fast idle electrovalve
49	Heater fan switch	190/1	Diverter valve by-pass control valve
50	Hazard warning signal switch with light	190/2	EGR by-pass electrovalve
51	Speedometer	191	Button switch on clutch for fast idle
53	Oil pressure gauge	192	Button switch on transmission for fast idle
54	Water temperature gauge	193	Fast idle system pushbutton switch
56	Tachometer	194	Button switch on driver's seat belt
57	Fuel gauge	194/2	Gear engaged button switch

CONNECTOR CODES

CONNECTOR NO.	NO. OF PINS	CIRCUITS/COMPONENTS	LOCATION
C1	3	Left front parking lights	Left front corner of engine compartment
C2	2	Left headlight	below voltage regulator
C3	2	Diverter valve by-pass electrovalve	Right side of engine compartment below diverter valve
C4	2	Jumper wire for idle stop solenoid (Jumper not used in California version)	Left rear of engine compartment below brake fluid reservoir
C5	2	EGR by-pass electrovalve	Left side of engine compartment
C6	1	Idle stop solenoid switch	On carburetor
C7	2	25,000 mile recorder	Front right side of Driver's footwell
C8	4	Hazard flasher	
C9	1	Distributor contact point	Right side of distributor
C10	2	Right front parking light	Right front side of engine compartment
C11	3	Right headlight	
C12	7	Horn, battery charge, fuel pump, and ignition mode relays	Left rear side of engine compartment below brake fluid reservoir
C13	8	Engine fan and ignition mode selection relays	
C14	3	Diverter valve by-pass relay	
C15	1	Distributor contact points	Right side of distributor
C16	3	Turn signal flasher	Right side of steering column under dash (on flasher)
C17	6	Windshield wiper motor	Under panel in front of windshield
C18	4	Windshield wiper intermittent switch	Behind center instrument panel
C19	3	Starter motor	Left side of engine above oil filter
C20	2	Engine fan motor	Left front of engine compartment behind charcoal canister
C21	6	Parking, interior, and back-up lights and diverter valve by-pass switch	Under dash on left side of steering column
C22	4	Diverter valve by-pass system, hand brake ON indicator, EGR valve, air injection by-pass system	
C23	4	Fuel pump, seat belt system, fuel gauge	Behind instrument panel
C24	6	Fuel and oil gauges, low oil pressure indicator, instruments ground	
C25	6	Water temperature gauge, tachometer, and high beam, battery charge, and turn signal indicators	
C26	3	Instrument lights, clock, and parking lights indicator	
C27	5	Fuel gauge	
C28	6	Tachometer	
C29	5	Oil pressure gauge	
C30	4	Water temperature gauge	
C31	3	Clock	
C32	5	Speedometer	
C33	8	Horn, turn signal, and high beam change-over switches	

CONNECTOR CODES

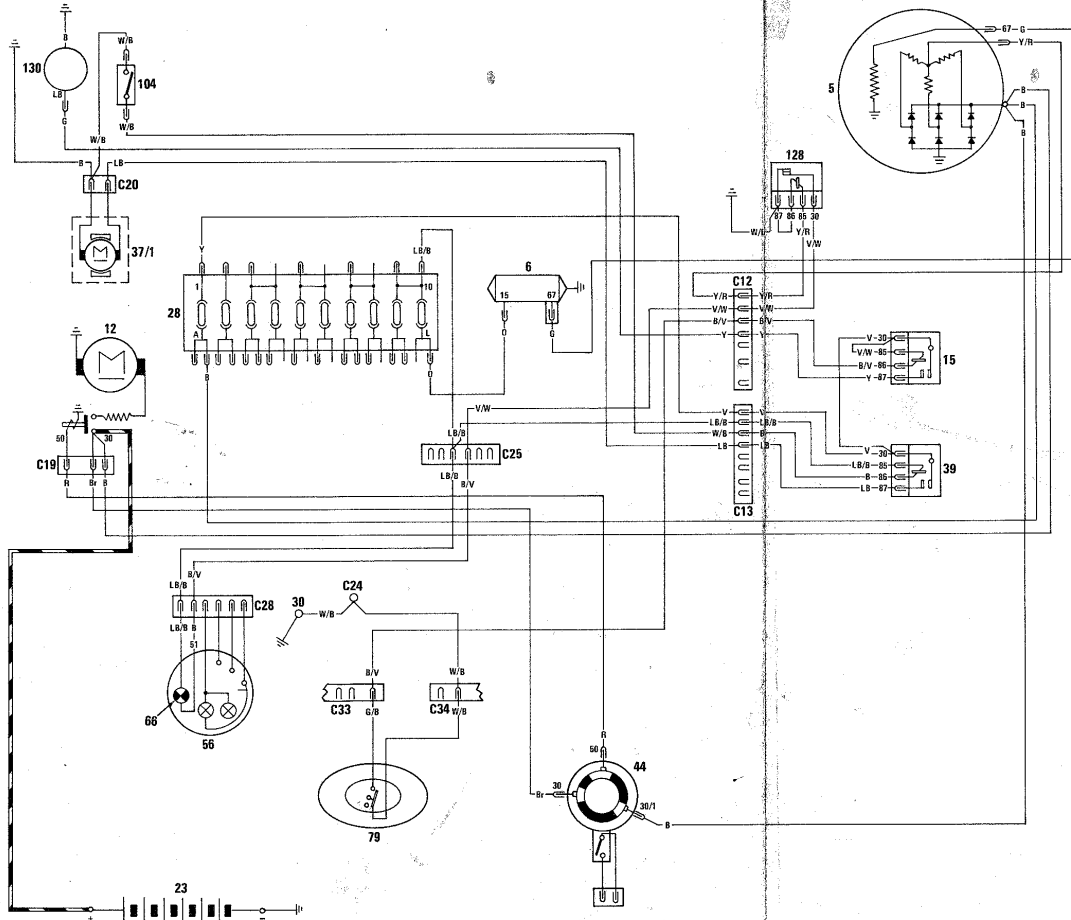
CONNECTOR NO.	NO. OF PINS	CIRCUITS/COMPONENTS	LOCATION
C34	6	Horn, windshield wiper switch	} Behind dash on left side of steering column
C35	1	Windshield washer switch	
C36	2	Remove key buzzer switch	Right side of steering column
C37	6	Windshield wiper 2 speed switch, ideogram lighting rheostat, hazard warning indicator, hand brake ON indicator	} Behind center instrument panel
C38	7	Instrument cluster light rheostat switch, fasten belts, EGR, CATALYST, and SLOW DOWN indicators	
C39	1	EGR by-pass electrovalve	Left side of engine
C40	6	Catalytic converter temperature indicator control unit, fasten belts and remove key buzzer, fasten belts relay	} Under glove compartment
C41	5	Fasten belts relay, tachimetric switch, catalytic converter temperature control unit	
C42	5	Tachimetric switch	
C43	3	Catalytic converter temperature indicator control unit	
C44	3	Seat belt warning delay switch	Right side of passenger's footwell
C45	2		
C46	4	Right rear tail light	Right side of trunk under mat
C47	2	Diverter valve by-pass switch	} Left side of transmission
C48	3	Back-up light and 5th gear switch	
C49	4	Left rear tail light	Left side of trunk under mat

WIRE COLOR CODE

B – Black	Bl/R – Blue/Red	P/B – Pink/Black
Bl – Blue	Br/B – Brown/Black	P/G – Pink/Gray
Br – Brown	Br/W – Brown/White	P/Y – Pink/Yellow
G – Gray	G/B – Gray/Black	R/B – Red/Black
Gr – Green	G/R – Gray/Red	R/Gr – Red/Green
LB – Light Blue	GY/ – Gray/Yellow	R/V – Red/Violet
O – Orange	Gr/B – Green/Black	V/B – Violet/Black
P – Pink	Br/W – Green/White	V/W – Violet/White
R – Red	LB/B – Light Blue/Black	W/B – White/Black
V – Violet	LB/R – Light Blue/Red	W/R – White/Red
W – White	LB/Y – Light Blue/Yellow	Y/B – Yellow/Black
Y – Yellow	LB/W – Light Blue/White	Y/R – Yellow/Red
B/V – Black/Violet	O/W – Orange/White	

124 SPIDER

Fuse A and Unprotected Circuit

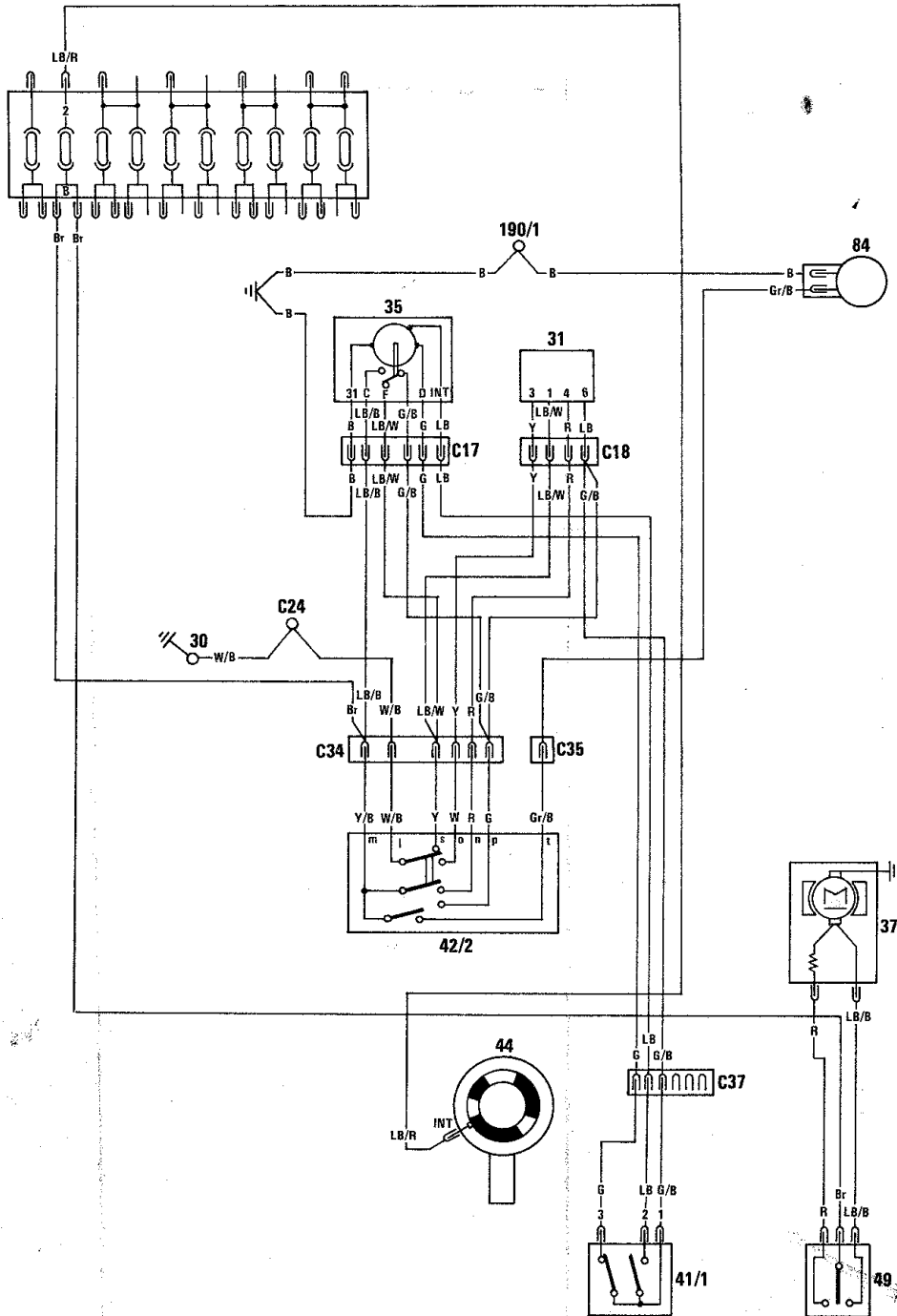


1976

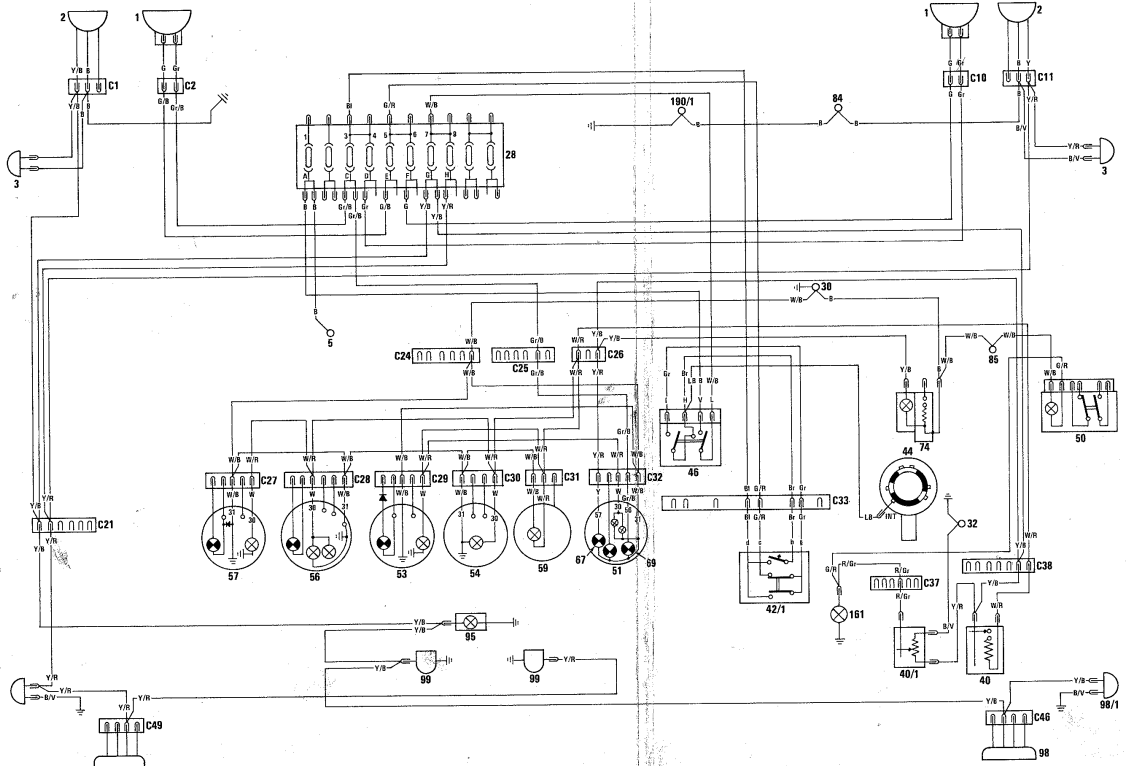
124-3

124 SPIDER

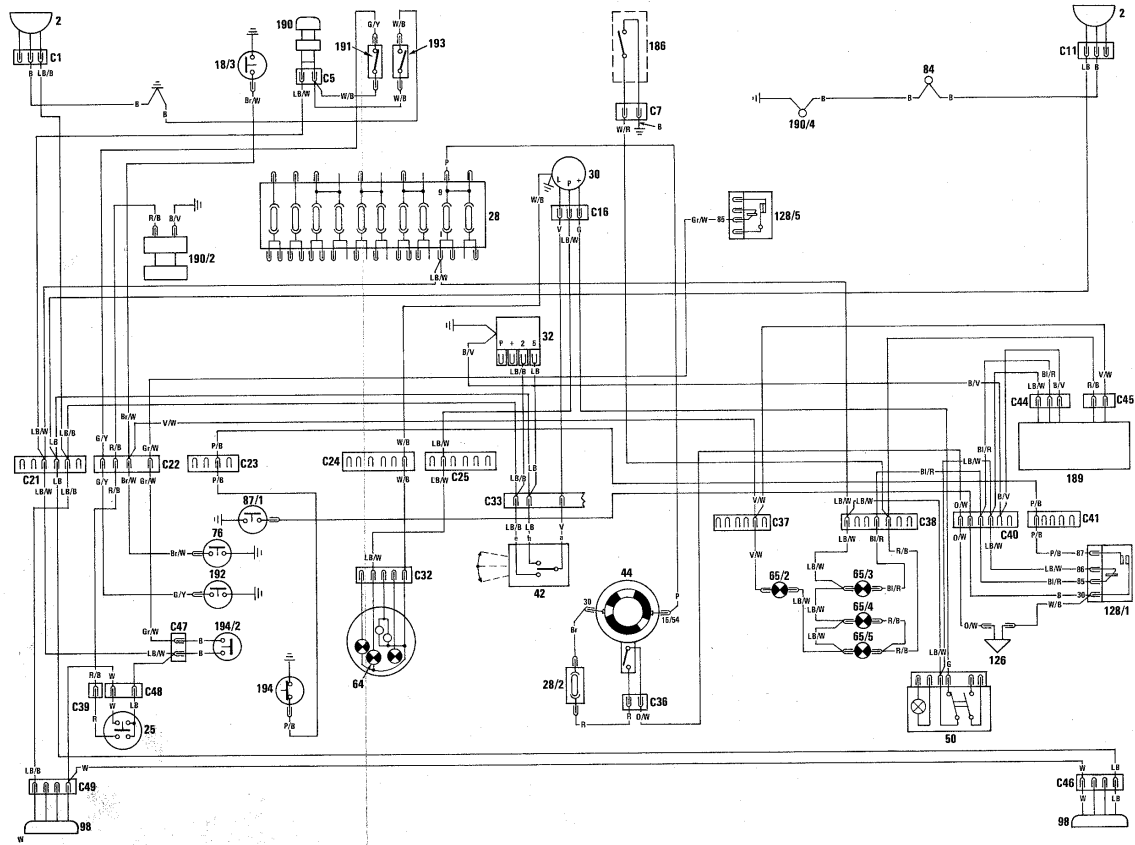
Fuse B



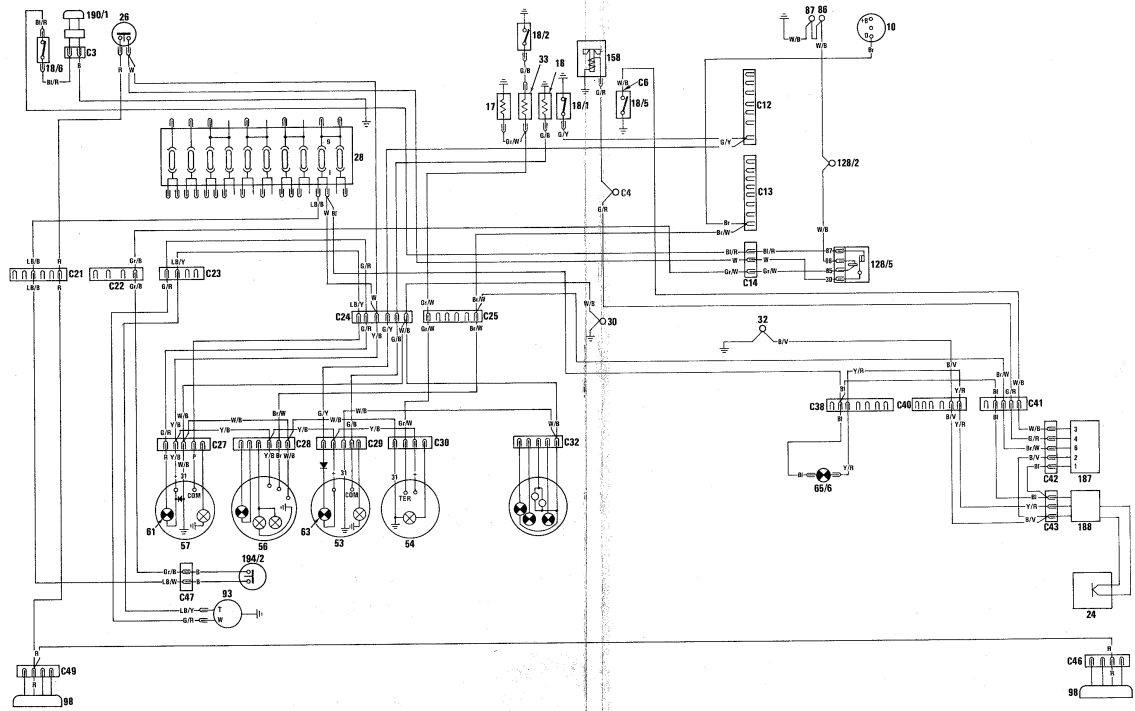
124 SPIDER Fuses C, D, E, F, G, H



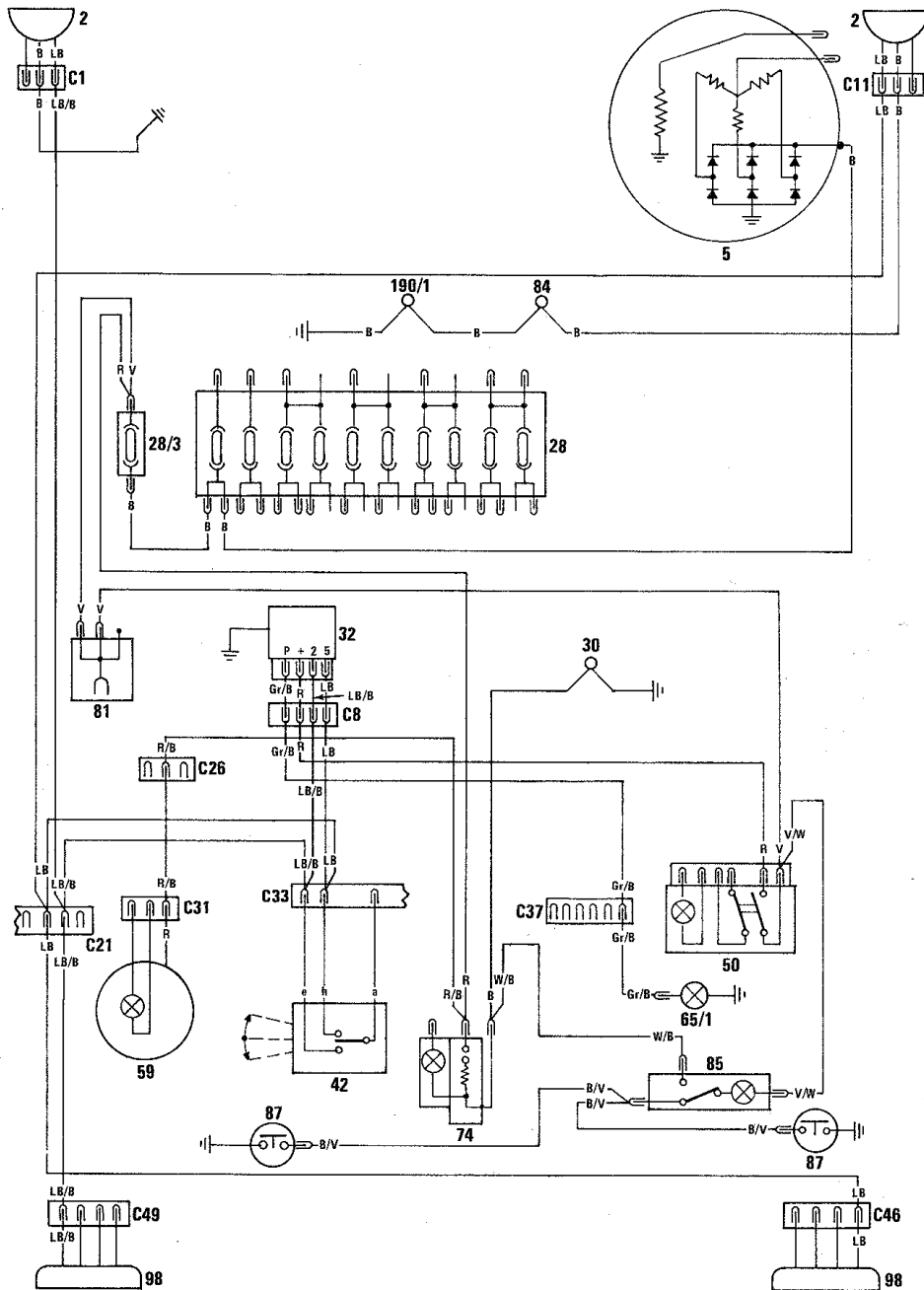
124 SPIDER Fuse I and Inline Fuse



124 SPIDER Fuse I



124 SPIDER Inline Fuse



124 SPIDER

Inline Fuse and Unprotected Circuits

